

Zertifizierung Projektionstücher

celexon Faltrahmenleinwand Mobil Expert

Die Projektionstücher der Serie

„celexon Faltrahmenleinwand Mobil Expert“ haben die Zertifizierungen zur
Entflammbarkeit gem. ISO 6941-2003

sowie

RoHS Directive 2011/65/EU

erhalten. Die Testergebnisse können den nachfolgenden Dokumenten entnommen
werden.

Im Mai 2012

celexon GmbH & Co. KG

Test Report

No. AJD201201981

Date: MAY.04, 2012

Page 2 of 5

1. ISO 6941

I. Sample details

Materials /Color	PVC SCREEN FILM / Black
Density	370g/m ²
Size of sample	Length 560 ± 2mm Width 170 ± 2mm

II. Test Conducted

Based on ISO 6941-2003: This International Standard specifies a method for the measurement of flame spread times of vertically oriented textile fabrics and industrial products in the form of single or multi-component fabrics when subjected to a small, defined flame

Conditioning		T :20 ± 2℃	H :65 ± 5% 24 h
Test Condition	Temperature	Relative humidity	Duration
	10℃-30℃	35%-65%	---

Surface ignition	Flame application time 10s
------------------	----------------------------

III. Test Results

Orientation of test specimen	Length			Width		
	1 Back	2 Back	3 Back	1 Back	2 Back	3 Back
Time of from the start to the lower(first)marker thread (s)	NS	NS	NS	NS	NS	NS
Time of from the start to the second marker thread (s)	NS	NS	NS	NS	NS	NS
Time of from the start to the upper (third) marker thread (s)	NS	NS	NS	NS	NS	NS

Remark: NS—Not severed

2. Test Result *

Test Part Description .:

Specimen No. 1. SGS Sample ID. SHA12-063387.001 Description. White/black plastic film(mix all*).

Remarks .:

- (1) 1 mg/kg = 1 ppm = 0.0001%.
- (2) MDL = Method Detection Limit.
- (3) ND = Not Detected (< MDL).
- (4) "-" = Not Regulated.
- (5)*--- The test was performed by SGS internal laboratory.

To be continued....

This document is issued by the Company subject to its General Conditions of Service printed overleaf, available on request or accessible at http://www.sgs.com/terms_and_conditions.htm and for electronic format documents, subject to Terms and Conditions for Electronic Documents at www.sgs.com/terms_e-document.htm. Attention is drawn to the limitation of liability, jurisdiction and jurisdiction issues defined therein. Any holder of this document is advised that information contained hereon reflects the Company's findings at the time of its issuance and is not intended to constitute a contract. The Company's sole responsibility is to its Client and this document does not exonerate parties to a transaction from exercising all their rights and obligations under the transaction documents. This document cannot be reproduced except in full, without prior written approval of the Company. Any unauthorized alteration, forgery or falsification of the content or appearance of this document is unlawful and offenders may be prosecuted to the fullest extent of the law. Unless otherwise stated, the results shown in this test report refer only to the sample(s) tested and such sample(s) are retained for 30 days only.



No.301,Yanguang Avenue,District 2, Sunlight Industrial Zone, Anji County, Zhejiang Province,China 313300 t (86-572) 5018825 f (86-572) 5018829 www.cn.sgs.com
中国·浙江·安吉县阳光工业园二区阳光大道301号 邮编: 313300 t (86-572) 5018825 f (86-572) 5018829 e sgs.china@sgs.com

Member of the SGS Group (SGS SA)

RoHS Directive 2011/65/EU.

Test Method : With reference to IEC 62321:2008

- (1) Determination of Cadmium by ICP-OES.
- (2) Determination of Lead by ICP-OES.
- (3) Determination of Mercury by ICP-OES.
- (4) Determination of Hexavalent Chromium by Colorimetric Method using UV-Vis.
- (5) Determination of PBBs / PBDEs content by GC-MS.

<u>Test Item(s).</u>	<u>Limit.</u>	<u>Unit.</u>	<u>MDL.</u>	<u>001.</u>
Cadmium (Cd).	100	mg/kg.	2	21
Lead (Pb).	1000	mg/kg.	2	3
Mercury (Hg).	1000	mg/kg.	2	ND
Hexavalent Chromium (Cr(VI)).	1000	mg/kg.	2	ND
Sum of PBBs.	1000	mg/kg.	-	ND
Monobromobiphenyl.	-	mg/kg.	5	ND
Dibromobiphenyl.	-	mg/kg.	5	ND
Tribromobiphenyl.	-	mg/kg.	5	ND
Tetrabromobiphenyl.	-	mg/kg.	5	ND
Pentabromobiphenyl.	-	mg/kg.	5	ND
Hexabromobiphenyl.	-	mg/kg.	5	ND
Heptabromobiphenyl.	-	mg/kg.	5	ND
Octabromobiphenyl.	-	mg/kg.	5	ND
Nonabromobiphenyl.	-	mg/kg.	5	ND
Decabromobiphenyl.	-	mg/kg.	5	ND
Sum of PBDEs.	1000	mg/kg.	-	ND
Monobromodiphenyl ether.	-	mg/kg.	5	ND
Dibromodiphenyl ether.	-	mg/kg.	5	ND
Tribromodiphenyl ether.	-	mg/kg.	5	ND
Tetrabromodiphenyl ether.	-	mg/kg.	5	ND
Pentabromodiphenyl ether.	-	mg/kg.	5	ND
Hexabromodiphenyl ether.	-	mg/kg.	5	ND
Heptabromodiphenyl ether.	-	mg/kg.	5	ND
Octabromodiphenyl ether.	-	mg/kg.	5	ND
Nonabromodiphenyl ether.	-	mg/kg.	5	ND
Decabromodiphenyl ether.	-	mg/kg.	5	ND

To be continued....

This document is issued by the Company subject to its General Conditions of Service printed overleaf, available on request or accessible at http://www.sgs.com/terms_and_conditions.htm and for electronic format documents, subject to Terms and Conditions for Electronic Documents at www.sgs.com/terms_e-document.htm. Attention is drawn to the limitation of liability, jurisdiction and jurisdiction issues defined therein. Any holder of this document is advised that information contained hereon reflects the Company's findings at the time of its intervention only and within the limits of Client's instructions, if any. The Company's sole responsibility is to its Client and this document does not exonerate parties to a transaction from exercising all their rights and obligations under the transaction documents. This document cannot be reproduced except in full, without prior written approval of the Company. Any unauthorized alteration, forgery or falsification of the content or appearance of this document is unlawful and offenders may be prosecuted to the fullest extent of the law. Unless otherwise stated the results shown in this test report refer only to the sample(s) tested and such sample(s) are retained for 30 days only.

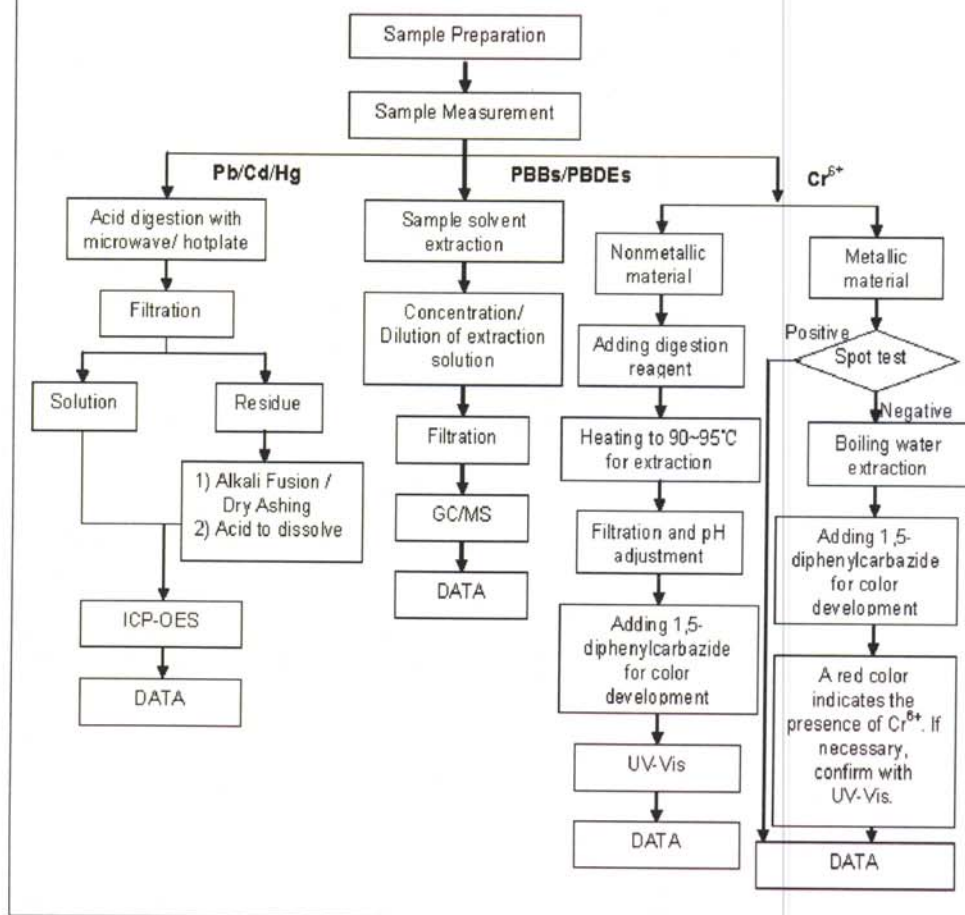
Notes :

- (1) The maximum permissible limit is quoted from directive 2011/65/EU, Annex II
- (2) *The sample(s) was/were analyzed on behalf of the applicant as mixing sample in one testing. The above result(s) was/were only given as the informality value and only for reference..

ATTACHMENTS

RoHS Testing Flow Chart

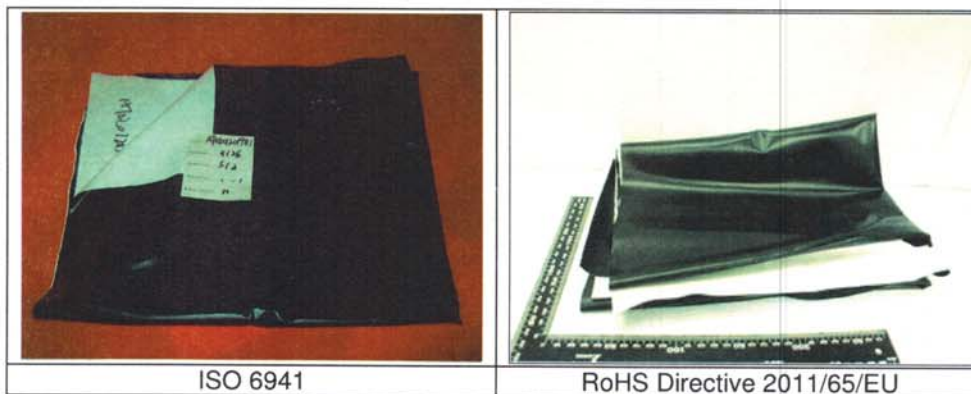
- 1) Name of the person who made testing: Jan Shi/Yoyo Wang/Allen Xiao/Gary Xu
- 2) Name of the person in charge of testing: Jeff Zhang/George Xu/ Linda Li
- 3) These samples were dissolved totally by pre-conditioning method according to below flow chart.
(Cr⁶⁺ and PBBs/PBDEs test method excluded)



To be continued....

This document is issued by the Company subject to its General Conditions of Service printed overleaf, available on request or accessible at http://www.sgs.com/terms_and_conditions.htm and for electronic formal documents, subject to Terms and Conditions for Electronic Documents at www.sgs.com/terms_e-document.htm. Attention is drawn to the limitation of liability, jurisdiction and jurisdiction issues defined therein. Any holder of this document is advised that information contained hereon reflects the Company's findings at the time of its issuance only and within the limits of Client's instructions, if any. The Company's sole responsibility is to its Client and this document does not exonerate parties to a transaction from exercising all their rights and obligations under the transaction documents. This document cannot be reproduced except in full, without prior written approval of the Company. Any unauthorized alteration, forgery or falsification of the content or appearance of this document is unlawful and offenders may be prosecuted to the fullest extent of the law. Unless otherwise stated, the results shown in this test report refer only to the sample(s) tested and such sample(s) are retained for 30 days only.

Photo Appendix:



*** End of Report ***

This document is issued by the Company subject to its General Conditions of Service printed overleaf, available on request or accessible at http://www.sgs.com/terms_and_conditions.htm and for electronic format documents, subject to Terms and Conditions for Electronic Documents at www.sgs.com/terms_e-document.htm. Attention is drawn to the limitation of liability, jurisdiction and jurisdiction issues defined therein. Any holder of this document is advised that information contained hereon reflects the Company's findings at the time of its investigation only and, within the limits of Client's instructions, if any. The Company's sole responsibility is to its Client and this document does not exonerate parties to a transaction from exercising all their rights and obligations under the transaction documents. This document cannot be reproduced except in full, without prior written approval of the Company. Any unauthorized alteration, forgery or falsification of the content or appearance of this document is unlawful and offenders may be prosecuted to the fullest extent of the law. Unless otherwise indicated the results shown in this test report refer only to the sample(s) tested and such sample(s) are retained for 30 days only.